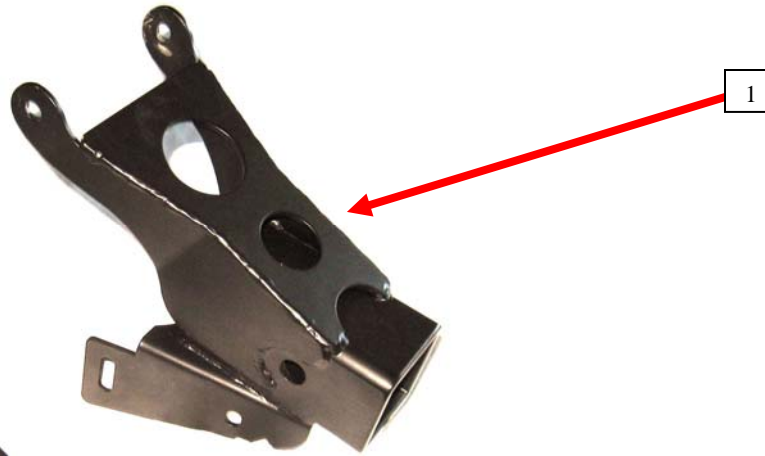




85110 – Can Am 2” Receiver Hitch

NO.	Description	QTY.
1	2” Receiver Hitch	1
2	3/8” x .75” Hex Head Bolt	4
3	3/8” Nylock Nut	4
4	3/8” Washer	8
5	5/8” x 3” Bent Hitch Pin	1
6	R-Pin	1



Hitch Use:

- The 2” Receiver hitch is designed to allow you to quickly and easily mount and dismount the DirtWorks 3-Point Hitch system to the Can Am line of ATV.
- The hitch can also be used for chores around the house for heavy duty trailering applications, such as moving your boats, trailers, etc.

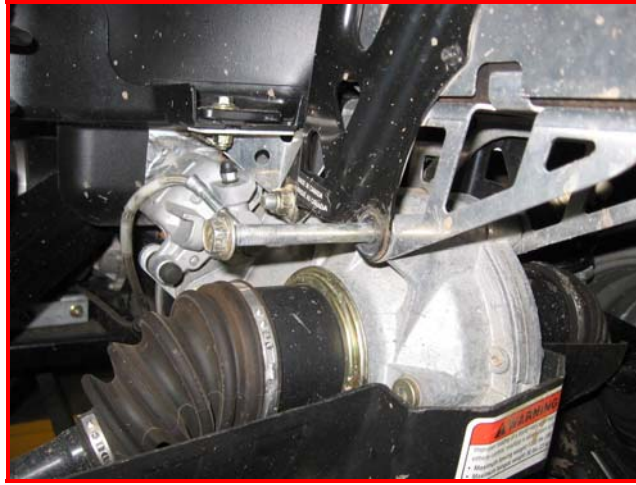
Hitch Compatible With:

- **Can Am Outlander**
- **Can Am Outlander MAX**
- **Can Am Renegade (MUST USE OPTIONAL OEM HITCH!)**

NOTE: On Outlander XT models the rear bumper must be removed when using the Kolpin DirtWorks 3-point system!

Mounting Specific Instructions:

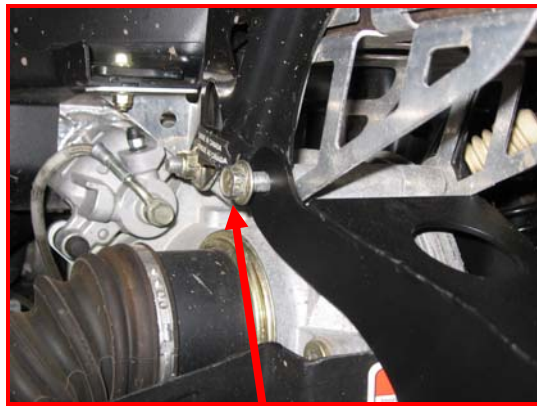
1. Remove the bolt as shown in the picture. The bolt holds the Aluminum Battery Plate to the frame and the rear differential.



2. Now, place the Kolpin Can Am 2" Receiver Hitch over the existing hitch plate and line up the hole where you just removed the bolt.
3. Replace the OEM bolt as shown below. Do not tighten yet.



Place Hitch over existing OEM hitch and align top holes as show.



Insert OEM Bolt Back through to attach hitch.

5. Bolt the Kolpin Can Am Hitch through the OEM hitch using the 3/8" Hex Head Bolts (4x), 3/8" Washers (8x) and the 3/8" Nylock Nut (4x). . Below is how the final attachment should look on both the right and left side.

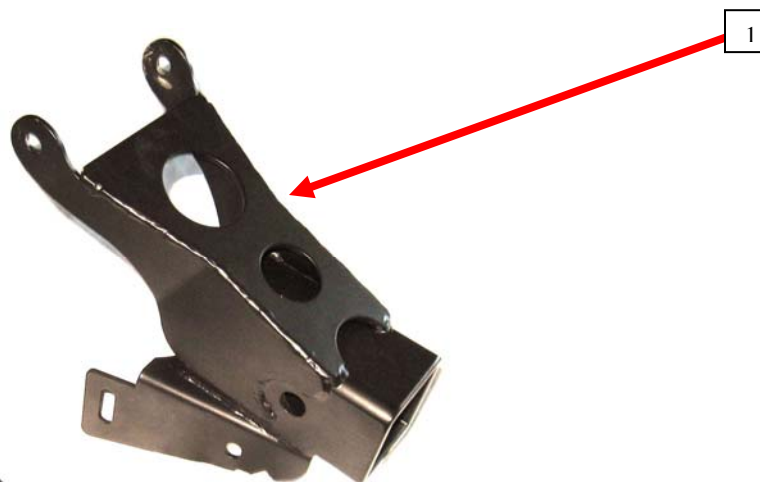


Kolpin Outdoors, Inc.
205 N. Depot Street, Fox Lake, WI 53933
Phone #: (877) 9KOLPIN or (920) 928-6514
www.kolpinpowersports.com
customerservice@kolpin.com



85110 – Attelage récepteur de 2 po Can Am

Réf.	Désignation	Qté
1	Attelage récepteur de 2 po	1
2	Boulon à 6 pans de 3/8 x 0,75 po	4
3	Écrou de 3/8 po à frein élastique	4
4	Rondelle de 3/8 po	8
5	Cheville d'attelage courbe de 5/8 x 3 po	1
6	Cheville en R	1



Utilisation de l'attelage

- L'attelage récepteur de 2 po est conçu pour permettre d'atteler et de déatteler de façon rapide et facile le système d'attelage 3 points DirtWorks à la gamme des VTT Can Am.
- L'attelage peut aussi être utilisé pour d'autres tâches diverses de remorquage robuste : déplacer un bateau, une remorque...

Compatibilité de l'attelage

- Can Am Outlander
- Can Am Outlander MAX
- Can Am Renegade (DOIT UTILISER L'ATTELAGE OEM EN OPTION!)

Mode de montage spécifique

1. Retirez le boulon (voir photo). Le boulon maintient la plaque de batterie en aluminium sur le bâti et sur le différentiel arrière.



2. Puis, placez l'attelage récepteur de 2 po Can Am Kolpin au-dessus de la plaque d'attelage existante et alignez-le sur le trou duquel vous avez retiré le boulon.
3. Reposez le boulon OEM (voir photo ci-dessous), sans le serrer encore.



Placez l'attelage au-dessus de l'attelage existant et alignez sur les trous du haut.



Reposez le boulon OEM pour fixer l'attelage.

4. Boulonnez l'attelage Can Am Kolpin dans l'attelage OEM à l'aide des (4) boulons à 6 pans de 3/8 po, des (8) rondelles de 3/8 po et des (4) écrous de 3/8 po à frein élastique. La photo ci-dessous montre la façon dont le montage doit être effectué sur les côtés droit et gauche.

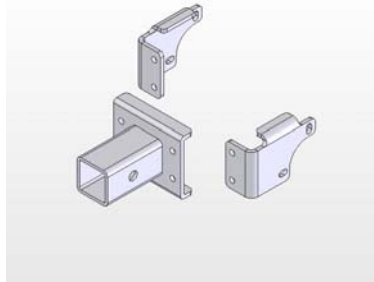


Kolpin Outdoors, Inc.
205 N. Depot Street, Fox Lake, WI 53933 (É.-U.)
Téléphone : 877-9KOLPIN ou 920-928-6514
www.kolpinpowersports.com
customerservice@kolpin.com



85180 – Suzuki Swing Axle 2” Receiver Hitch

Description	Quantity
Left Side Plate	1
Right Side Plate	1
Hitch Tube Weldment	1
5/16” x 1.25” Grade 8 Bolt	4
5/16” Grade 8 Nylock Nut	4
5/16” Flat Washer	8
5/8” x3.00” Bent Hitch Pin	1
R-Pin	1
Instruction Manual	1



Hitch Assembly:

- Using the 4 -5/16” bolts provided, loosely attach the Hitch Tube Weldment to the two brackets provided. Secure with flat washer and Nylock nut provided.

Hitch Mounting:

- Remove the (4) 10mm bolts that hold the stock hitch on the ATV. Remove OEM Hitch.
- Mount DirtWorks hitch (85180) to the same holes that the existing hitch was in and attach using the same OEM bolts that you just removed.
- Tighten down the Receiver Hitch Plate to the Left and Right Side Plates, making sure that the Hitch is level horizontally while tightening.

Hitch Use:

- The 2” Receiver hitch is designed to allow you to quickly and easily mount and dismount the DirtWorks 3-Point Hitch system.
- Kolpin recommends the use of the DirtWorks Suspension Lock with the use of the DirtWorks system.
- The hitch can also be used for chores around the house, such as moving your boats, trailers, etc.

Hitch Compatible With:

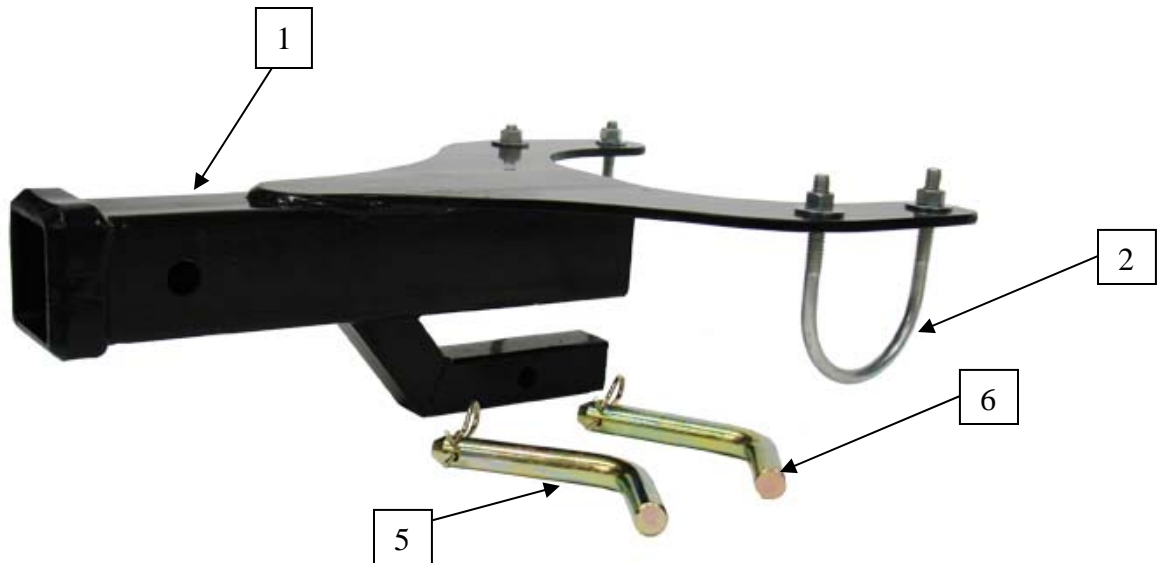
- 2003-current Suzuki Vinson 500
- 2003-current Suzuki Eiger 400

Kolpin Powersports, Inc.
 205 N. Depot St., Fox Lake, WI
 Phone #: (877) 9KOLPIN or (920) 928-3118
www.kolpin.com
customerservice@kolpin.com



90250 – Kawasaki Mule 2” Receiver Hitch

NO.	Description	QTY.
1	2” Receiver Hitch	1
2	U-Bolt	2
3	Washers	4
4	Nylock Nut	4
5	5/8” Bent Hitch Pin	1
6	1/2” Bent Hitch Pin	1
7	R-Pin	2



Hitch Use:

- The 2” Receiver hitch is designed to allow you to quickly and easily mount and dismount the Dirt Works 3-Point Lift System.
- It can also be used for any other heavy duty trailering needs.

Mounting Instructions:

1. Slide the 1 1/4” Receiver on the Kolpin Kawasaki Hitch into the existing 1 1/4” OEM Hitch.
2. Pin the hitch in place using the 1/2” Bent Hitch Pin. Secure using the R-Clip Provided.
3. Next, place the u-bolts from the underside of the axle up through the Kolpin Hitch.
4. Place Washers and Nylock Nuts provided and securely fasten to the machine.

Hitch Compatible with:

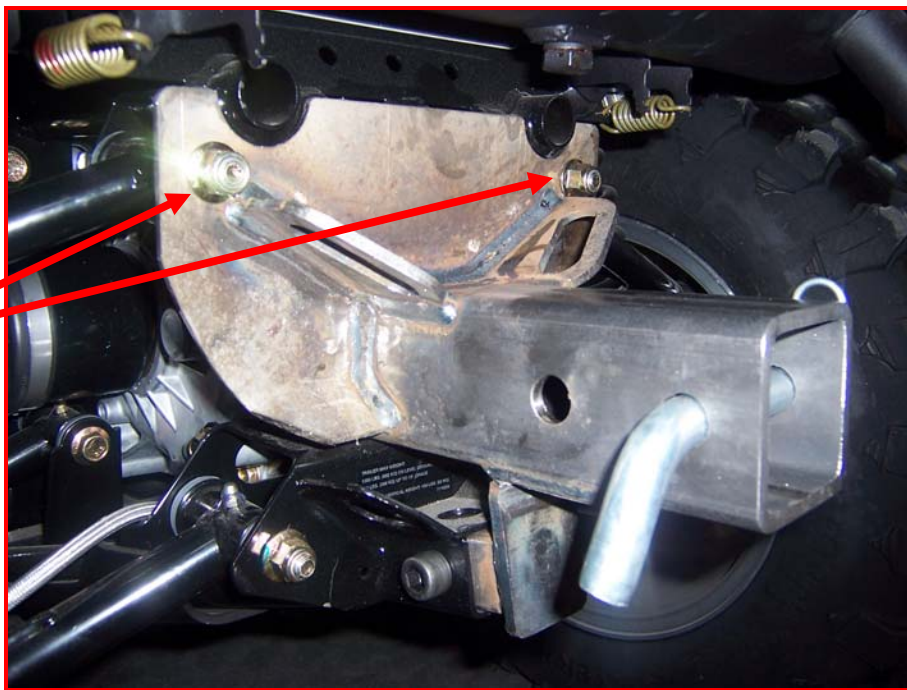
3010 models

Kolpin Outdoors, Inc.
 205 N. Depot Street, Fox Lake, WI 53933
 Phone #: (877) 9KOLPIN or (920) 928-6514
www.kolpinpowersports.com customerservice@kolpin.com



85190 – Polaris XP - 2" Receiver Hitch

Description	Quantity
XP Hitch Weldment	1
½" - 13 x 2.25" Hex Head Bolt	1
½" Nylon Nut	1
½" Washer	2
5/8" x 3.00" Bent Hitch Pin	1
R-Pin	1



Loosen and
Remove Nuts

Hitch Mounting:

1. Loosen the (2) OEM Nuts from the ATV as pointed out above.
2. Slide the hitch into the OEM 1 ¼" Receiver, making sure that the (2) Top OEM Bolts slide through the Kolpin Hitch.
3. Place the (2) OEM Nuts back onto the OEM Bolts. Don't tighten yet!
4. Place the ½" Bolt provide through the 1 ¼" Receiver on the bottom side of the hitch using (2) ½" Washers, one on each side.
5. Place the ½" Nylon Nut provided on the ½" Bolt.
6. Now that the hitch is all connected to the ATV, Tighten ALL hardware securely, making sure the hitch is tightened evenly, and the ½' Bolt is tightened last.

Kolpin Outdoors, Inc.
205 N. Depot St, Fox Lake, WI 53933
Phone #: (877) 9KOLPIN or (920) 928-3118
www.kolpin.com
customerservice@kolpin.com



85195 – Polaris XP (2010-2011) 2" Receiver Hitch

Description	Quantity
XP Hitch Weldment	1
½" - 13 x 2.25" Hex Head Bolt	1
½" -13 x 1.50" Hex Head Bolt	2
½" Nylon Nut	3
½" Washer	6
Lock Washers	4
5/8" x 3.00" Bent Hitch Pin	1
R-Pin	1



Hitch Mounting:

1. Slide the hitch into the OEM 1 ¼" Receiver on the ATV.
2. Run the (2) ½" x 1.50" bolts thru the top of the hitch, then through the lock washer and then through the frame of the ATV. Secure using the washers and the Nylon Nut provided.
3. Place the ½" x 2.25" Bolt provide through the 1 ¼" Receiver on the bottom side of the hitch using (2) ½" Washers, one on each side. Place the ½" Nylon Nut provided on the ½" Bolt.
4. Now that the hitch is all connected to the ATV, Tighten ALL hardware securely, making sure the hitch is tightened evenly.



85145 – Honda Rancher AT 2” Receiver Hitch

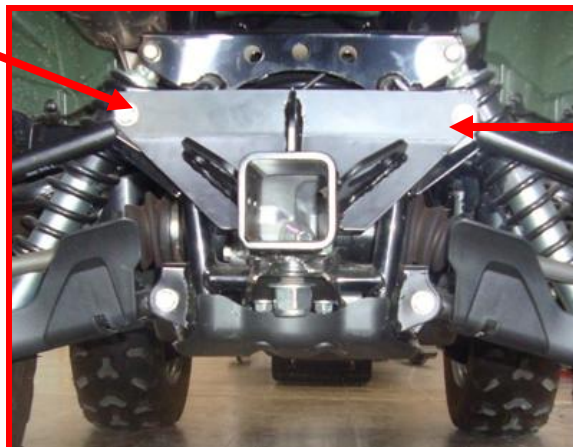
Description	Quantity
Rancher AT Hitch Weldment	1
10mm Hex Head Bolt	2
10mm Lock Nut	2
3/4" Washer	1
3/4" Nylon Nut	1
5/8" x 3.00" Bent Hitch Pin	1
R-Pin	1

Hitch Mounting:

1. Remove both 10mm Bolts as shown below. Once bolts are removed be sure not to put any weight on the machine, as the A-Arms may move out of position.



2. Slide the 3/4" threaded stud, located on the bottom of the Kolpin Hitch, through the hole on the OEM hitch.
3. Take the (2) 10mm bolts provided and insert them through the Kolpin hitch and back through the A-Arm brackets and A-ARMS in reverse order of Step 1.





4. Tighten 10mm Bolts securely, using the (2) 10mm Lock Nuts provided.
5. Insert the $\frac{3}{4}$ " Washer and Nylon Nut onto the $\frac{3}{4}$ " Threaded Stud, and tighten securely!



6. Place Bent Hitch Pin through Hitch Tube and secure by clipping the R-Clip through the hole on the bent hitch pin.

Hitch Use:

- The 2" Receiver hitch is designed to allow you to quickly and easily mount and dismount the DirtWorks 3-Point Hitch system.
- Kolpin recommends the use of the DirtWorks Suspension Lock with the use of the DirtWorks system.
- The hitch can also be used for chores around the house, such as moving your boats, trailers, etc.

Hitch Compatible With:

1. Honda Rancher AT

Kolpin Outdoors, Inc.
205 N. Depot St, Fox Lake, WI 53933
Phone #: (877) 9KOLPIN or (920) 928-3118
www.kolpin.com
customerservice@kolpin.com