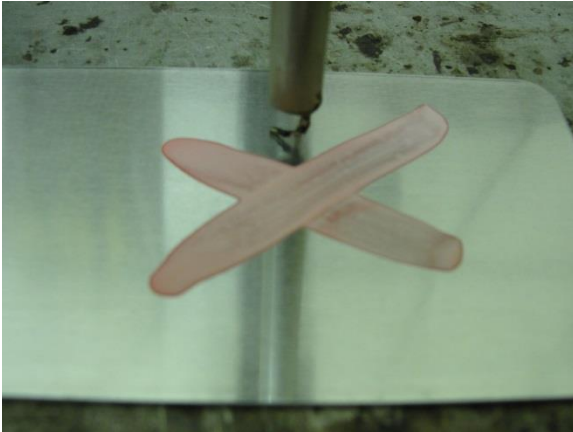
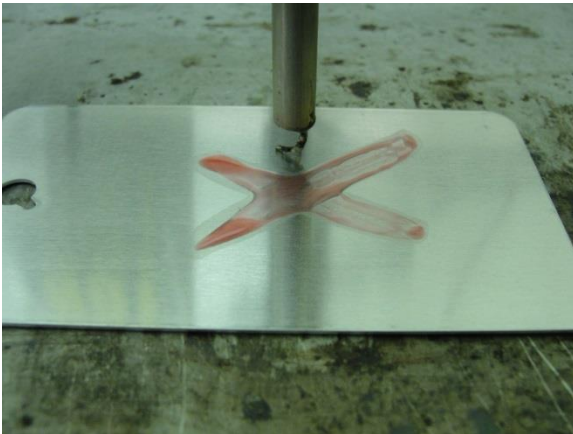


TEMPILAQ - How To Read Temperature Indication

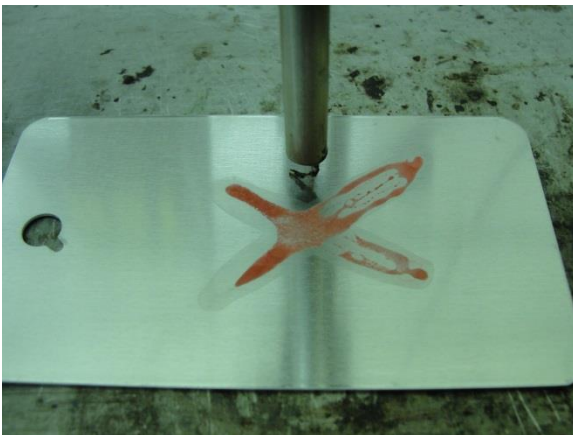


At conditions below the product temperature rating the mark will appear solid, opaque and chalky.



At (or above) the product temperature rating the mark will melt and begin to change shape. Mark will often drip or run on vertical surfaces.

This phase change from solid to liquid serves as the visual indication that the temperature rating has been reached (or exceeded).



If cooled below the product temperature rating the mark will re-solidify.

The change in physical appearance from the initial mark serves as a permanent record that the product temperature rating has been met (or exceeded).