



# Exploded View Parts List

## Benjamin Trail NP

BT9M22SNP - .22 (5.5mm) Caliber

BT9M22WNP- .22 (5.5mm) Caliber

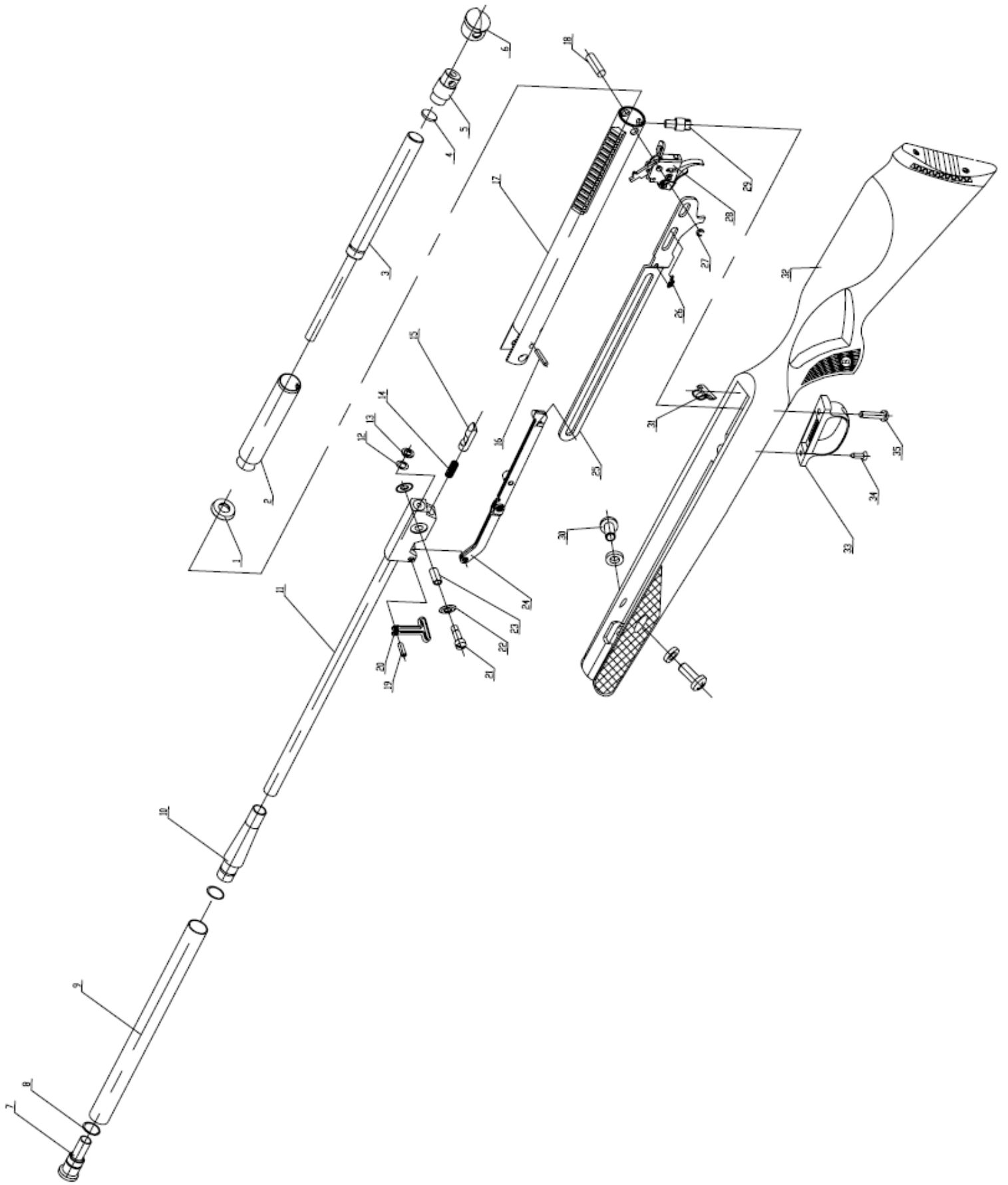
BT1K77SNP- .177 (4.5mm) Caliber

Crosman Corporation  
7629 Routes 5 & 20  
East Bloomfield, NY 14443

Phone: (800) 724-7486  
Parts Order Fax: (585) 657-5405

[www.crosman.com](http://www.crosman.com)

---



Item Call Out #	Part Number	Description	BT9M22SNP/ BT9M22WNP/ BT9M22LNP	BT1K77SNP
1	B18-04-1A	Piston Seal	1	1
2	BT9M22-03-100A	Piston	1	1
3	BT9M22-00-5	Gas Spring	1	1
4	BT9M22-00-7	Plain Plate	1	1
5	BT9M22-00-2	Back Spring Guide	1	
6	BT9M22-00-3	Tube Cover	1	1
7	BT1500-01-1	Sleeve Cover	1	1
8	GBT-3452.1-2005	O Rings 15.5x1.8-G.S	2	2
9	BT9M22-01-1	Sleeve	1	1
10	BT9M22-01-2	Sleeve Link	1	1
11	BT9M22-01-100	Barrel Assembly (5.5mm/.22 cal)	1	
	BT1K77SNP-01-100	Barrel Assembly (4.5mm/.177 cal)		1
12	B22-00-1	Adjust Washer	0-2	0-2
13	B12-00-14	Breach Seal	1	1
14	B18-01-3A	Jam Spring	1	1
15	B18-01-2	Alive Jam	1	1
16	BT9M22-00-4	Detent	1	1
17	BT9M22-02-00	Compression Tube Assembly	1	1
18	B18-00-7	Fixed Pin	1	1
19	B12-00-1B	Link Pin	1	1
20	BT9M22-00-1	Sling Mount	1	1
21	B19-2-00-2	Break Bolt	1	1
22	B18-00-15A	Washer	2	2
23	B18-01-1A	Bushing	1	1
24	B18-07-00	Lever Assembly	1	1
25	B18-00-5	Bear Trap Lever	1	1
26	B18-00-12A	Safety Spring	1	1
27	GB896-86-3	E-Ring	1	1
28	B18-05-00	Trigger Pack Assembly	1	1
29	B18-00-9	Stock Link Pin	1	1
30	GBT-818-2000-M5x14	Pan Head Screws (nylok)	2	2
31	B19-2-00-1	Stock Lug Brace	1	1
32	BT9M22SNP-03-00	Synthetic Stock Assembly	1	1
	BT9M22WNP-01-00	Hardwood Stock Assembly		
33	B18-00-11A	Trigger Guard (Wood Stocks Only)	1	
34	GB847-85-ST3-5x16	Screw, Trigger Guard Front (wood stocks only)	1	
35	GB823-88-M6X20	Screw, Trigger Guard Rear - nylok	1	1

- For Current Pricing Contact Crosman Customer Service at (800) 724-7486.
- This parts list is intended to be an informational guide in ordering parts. It is not instructional material and we therefore assume no responsibility for those who use without proper factory training.
- Please order by part number and description.
- Check or money order for the total price must accompany the order.